



# Interlocking RRAP System

NEW

## Product Benefits

- Independent of sleeper spacing
- Precise and secure
- Cost effective
- Rodded for extra strength
- Quick & easy to install
- No special tools required

Rosehill Rail's Interlocking RRAP system is a high strength modular system, independent of sleeper spacing. Each individual panel is manufactured to fit the specific rail, sleeper and fastener type to ensure the perfect fit.

Gauge and field panels are securely fixed using Rosehill Rail's Interlocking system, linking the panels together and ensuring panels cannot become dislodged. Made from 100% recycled tyres, the solid rubber panels are not only sustainable but they are tough and durable, engineered for long-term use.

Ideal for temporary, semi-permanent and permanent access points, the system has been designed specifically to be quick and easy to install, to reduce track possession times and deliver significant cost savings.

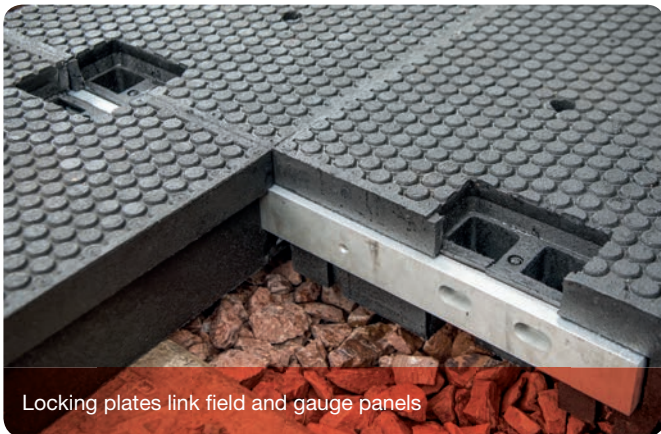




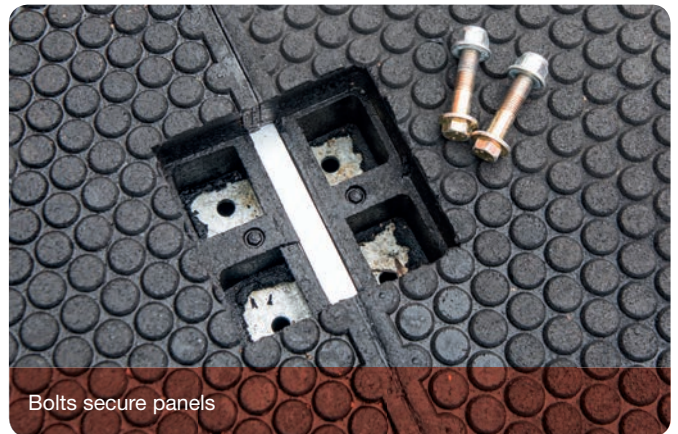
Quick and easy to install



Independent of sleeper spacing



Locking plates link field and gauge panels



Bolts secure panels

## Technical Information

### FIELD Locking Plate

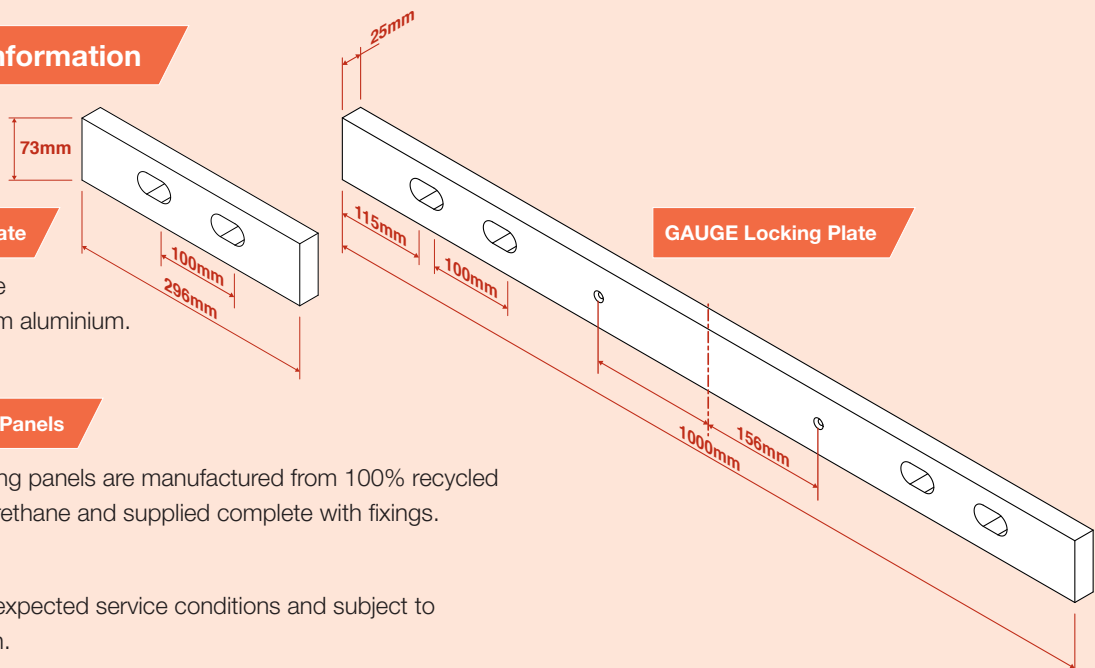
Locking plates are manufactured from aluminium.

### Rubber Crossing Panels

Rosehill Interlocking panels are manufactured from 100% recycled rubber and polyurethane and supplied complete with fixings.

### Lifespan

25 years+ under expected service conditions and subject to correct installation.



For more information, please call the Rosehill Rail sales team on **+44 (0)1422 317 473**, or email [info@rosehillrail.com](mailto:info@rosehillrail.com)

Spring Bank Mills, Watson Mill Lane, Sowerby Bridge, West Yorkshire, HX6 3BW, United Kingdom

